

TECH NOTE :: Formatting a CF-CARD to NTFS

Version: 2015-06-10

Author: Christof Salcher, HBM Germany

Status: public

Abstract

This Tech Note describes how to format the exchangeable Compact Flash Card (CF-CARD) from FAT format to NTFS.

Intro

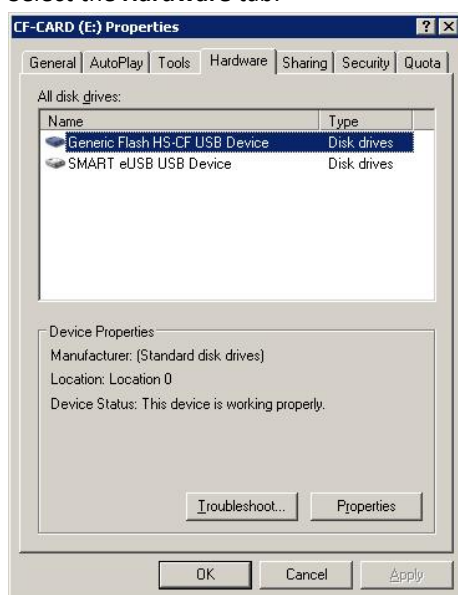
CX22 / CX22-W can store data on a removable CF-CARD. This CF-CARD has to be formatted to NTFS format to get the best write performance.

Warning

Formatting the Compact Flash Card to NTFS means that **all the data on the CF-Card will be deleted**. Before formatting the CF-Card, make sure to copy all important data on a safe location.

Step by Step Workflow

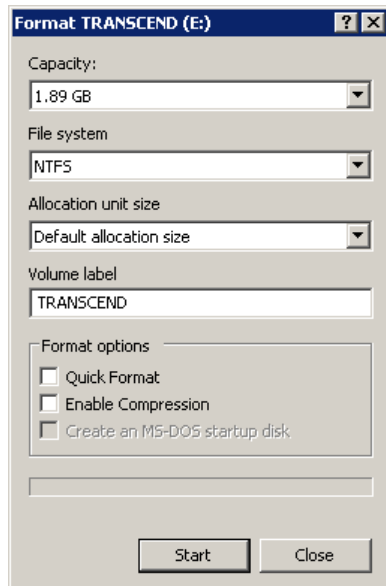
1. Log in to the CX22-W then click on “Exit to Windows” to open the standard Windows Explorer.
2. Open a Windows Explorer window (e.g. by double-clicking on “My Computer”).
3. Open the context menu of the CF-Card drive with a right mouse click and select **Properties**.
4. Select the **Hardware** tab.



5. Select the CF-Card (“Generic Flash HS-CF USB Device”) and click on **Properties**.
6. Select the **Policies** tab.



7. Select the **Optimize for performance** policy and validate by clicking on **OK**.
8. A system dialog should pop up to ask if you want to restart the computer now. Select **No**.
9. Open the context menu of the CF-Card drive with a right mouse click and select **Format....**
10. In the dialogue “File system” select **NTFS**.



11. [Optional] Select **Quick Format**.
12. Click **Start**.